

HAMAR LASER - Plane 5 Report

Alignment Summary

Company Name: Hamar Laser Instruments, Inc.

Address: 5 Ye Olde Road

City: Danbury

State/ Province / Zip: CT

User Name: Sidney D'Souza

Comments: Flange Flatness Sample Report

Country: USA

Station / Location: Mumbai, India

Flatness

Tower Flange-Bottom 0.011 mm (TIR)

Slope of Best Fit Plane relative to Laser Plane

Tower Flange-Bottom (X Slope) 0.08308 mm/m, 17.1 arc secs.

Tower Flange-Bottom (Y Slope) 0.08394 mm/m, 17.3 arc secs.

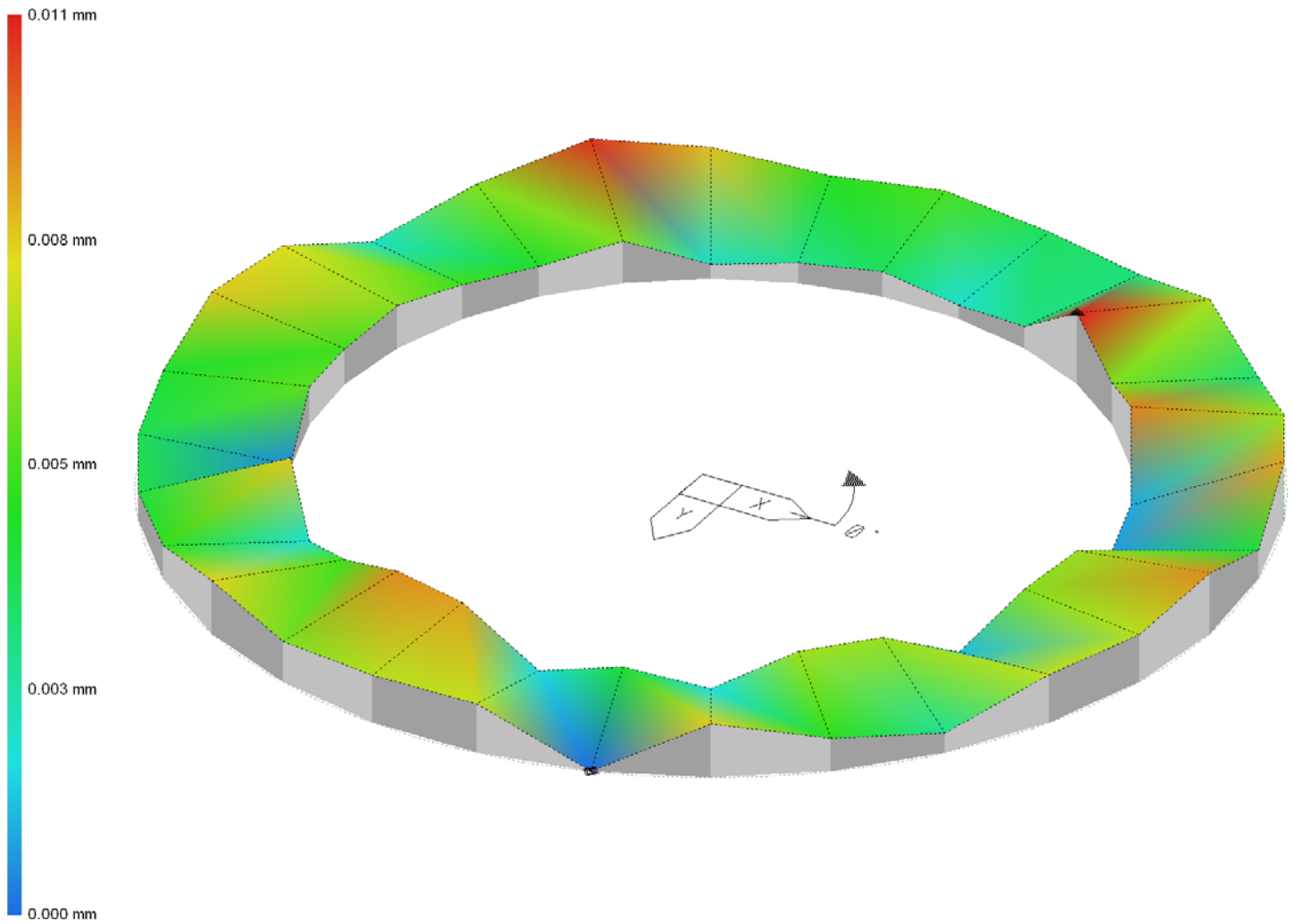
NOTE: Slope is positive when the surface rises away from the origin

Surface Plot

Company Name: Hamar Laser Instruments, Inc.
Address: 5 Ye Olde Road
City: Danbury
State/ Province / Zip: CT
User Name: Sidney D'Souza
Comments: Flange Flatness Sample Report

Country: USA
Station / Location: Mumbai, India

CORRECTED SURFACE FLATNESS (Relative to Best Fit Plane)



Tower Flange-Bottom Flatness = 0.011 mm (TIR)

Dashed Frame Represents the Best Fit Plane

- ▷ (Triangle) Indicates the High Point on the Surface rel. to the BFP
- ◊ (Diamond) Indicates the Low Point on the Surface rel. to the BFP
- Coordinates Icon Located at origin (0,0)

Tower Flange-Bottom (Surface 1)

X distance	Y distance	Raw Flatness Data	Corrected Flatness*	Comments
1100	0	-0.004	0.001	R 1100 @ 0.00°
1076	-229	-0.031	-0.005	R 1100 @ 12.00°
1005	-447	-0.055	-0.004	R 1100 @ 24.00°
890	-647	-0.073	0.004	R 1100 @ 36.00°
736	-817	-0.103	0.001	R 1100 @ 48.00°
550	-953	-0.125	0.005	R 1100 @ 60.00°
340	-1046	-0.158	-0.002	R 1100 @ 72.00°
115	-1094	-0.182	-0.003	R 1100 @ 84.00°
-115	-1094	-0.200	-0.002	R 1100 @ 96.00°
-340	-1046	-0.215	-0.002	R 1100 @ 108.00°
-550	-953	-0.225	-0.003	R 1100 @ 120.00°
-736	-817	-0.225	0.001	R 1100 @ 132.00°
-890	-647	-0.226	-0.001	R 1100 @ 144.00°
-1005	-447	-0.218	0.000	R 1100 @ 156.00°
-1076	-229	-0.204	0.001	R 1100 @ 168.00°
-1100	0	-0.188	0.000	R 1100 @ 180.00°
-1076	229	-0.166	0.000	R 1100 @ 192.00°
-1005	447	-0.147	-0.005	R 1100 @ 204.00°
-890	647	-0.113	0.003	R 1100 @ 216.00°
-736	817	-0.092	-0.003	R 1100 @ 228.00°
-550	953	-0.062	0.000	R 1100 @ 240.00°
-340	1046	-0.033	0.004	R 1100 @ 252.00°
-115	1094	-0.011	0.003	R 1100 @ 264.00°
115	1094	0.001	-0.004	R 1100 @ 276.00°
340	1046	0.019	-0.001	R 1100 @ 288.00°
550	953	0.026	-0.004	R 1100 @ 300.00°
736	817	0.035	0.001	R 1100 @ 312.00°
890	647	0.033	0.001	R 1100 @ 324.00°
1005	447	0.020	-0.004	R 1100 @ 336.00°
1076	229	0.013	0.001	R 1100 @ 348.00°
1500	0	0.032	0.004	R 1500 @ 0.00°
1467	-312	-0.002	-0.001	R 1500 @ 12.00°
1370	-610	-0.031	0.003	R 1500 @ 24.00°
1214	-882	-0.068	0.001	R 1500 @ 36.00°
1004	-1115	-0.109	-0.002	R 1500 @ 48.00°
750	-1299	-0.142	0.002	R 1500 @ 60.00°
464	-1427	-0.180	-0.002	R 1500 @ 72.00°
157	-1492	-0.210	-0.002	R 1500 @ 84.00°
-157	-1492	-0.235	0.000	R 1500 @ 96.00°
-464	-1427	-0.255	0.000	R 1500 @ 108.00°
-750	-1299	-0.265	0.003	R 1500 @ 120.00°
-1004	-1115	-0.268	0.005	R 1500 @ 132.00°
-1214	-882	-0.270	0.001	R 1500 @ 144.00°
-1370	-610	-0.265	-0.003	R 1500 @ 156.00°
-1467	-312	-0.242	0.002	R 1500 @ 168.00°
-1500	0	-0.218	0.003	R 1500 @ 180.00°
-1467	312	-0.193	-0.001	R 1500 @ 192.00°
-1370	610	-0.161	-0.001	R 1500 @ 204.00°
-1214	882	-0.125	-0.001	R 1500 @ 216.00°
-1004	1115	-0.087	0.000	R 1500 @ 228.00°
-750	1299	-0.047	0.003	R 1500 @ 240.00°
-464	1427	-0.015	0.001	R 1500 @ 252.00°
-157	1492	0.017	0.002	R 1500 @ 264.00°
157	1492	0.044	0.002	R 1500 @ 276.00°
464	1427	0.056	-0.005	R 1500 @ 288.00°
750	1299	0.077	0.003	R 1500 @ 300.00°

(table continued on next page)

Notes:
 'Corrected Flatness' = Surface Deviation (Z) from the Best Fit Plane at each X,Y location
 'Raw Flatness Data' = Target measurements, as recorded
 *Surface Data Shifted Up. Low Point=0, all other points Positive

Tower Flange-Bottom (Surface 1)

X distance	Y distance	Raw Flatness Data	Corrected Flatness*	Comments
1004	1115	0.080	0.000	R 1500 @ 312.00°
1214	882	0.076	-0.002	R 1500 @ 324.00°
1370	610	0.070	0.002	R 1500 @ 336.00°
1467	312	0.053	0.002	R 1500 @ 348.00°

Notes:

'Corrected Flatness' = Surface Deviation (Z) from the Best Fit Plane at each X,Y location

'Raw Flatness Data' = Target measurements, as recorded

*Surface Data Shifted Up. Low Point=0, all other points Positive