

# The L-106 Series Accessories

L-106 Instrument Stand

L-106A Screw Lift

L-106X Single-Axis Translation Slide

L-106XY 2-Axis Translation Slide

*Provides stability and additional features for Hamar Laser's continuously rotating lasers*

## ***L-106 Instrument Stand***

- Provides a stable platform for all of Hamar Laser's continuously rotating laser plane systems.
- Multiple height flexibilities to position the laser systems at an optimal point for taking measurements.
- Lightweight, compact and rugged. Feet fit inside the stand and the entire unit fits into a wheeled carrying case that is about the size of standard luggage.
- Flexible height extends from 12 in. to 48 in. (305 mm to 1220 mm).
- Wheeled shipping case included.

## ***L-106A Screw Lift***

- Positions the laser at precise elevations. Has 7 in. (178 mm) of travel with .020 in. (0.5 mm) resolution.

## ***L-106X Single-Axis Translation Slide***

- Allows laser to slide back and forth without changing angle.
- Particularly useful for roll alignment, gantry master-to-slave rail parallelism checking.

## ***L-106XY 2-Axis Translation Slide***

- Allows 2-axis (X and Y translation) of the laser during setup.
- Particularly useful for roll alignment, gantry master-to-slave rail parallelism checking.



**L-106 Instrument Stand**



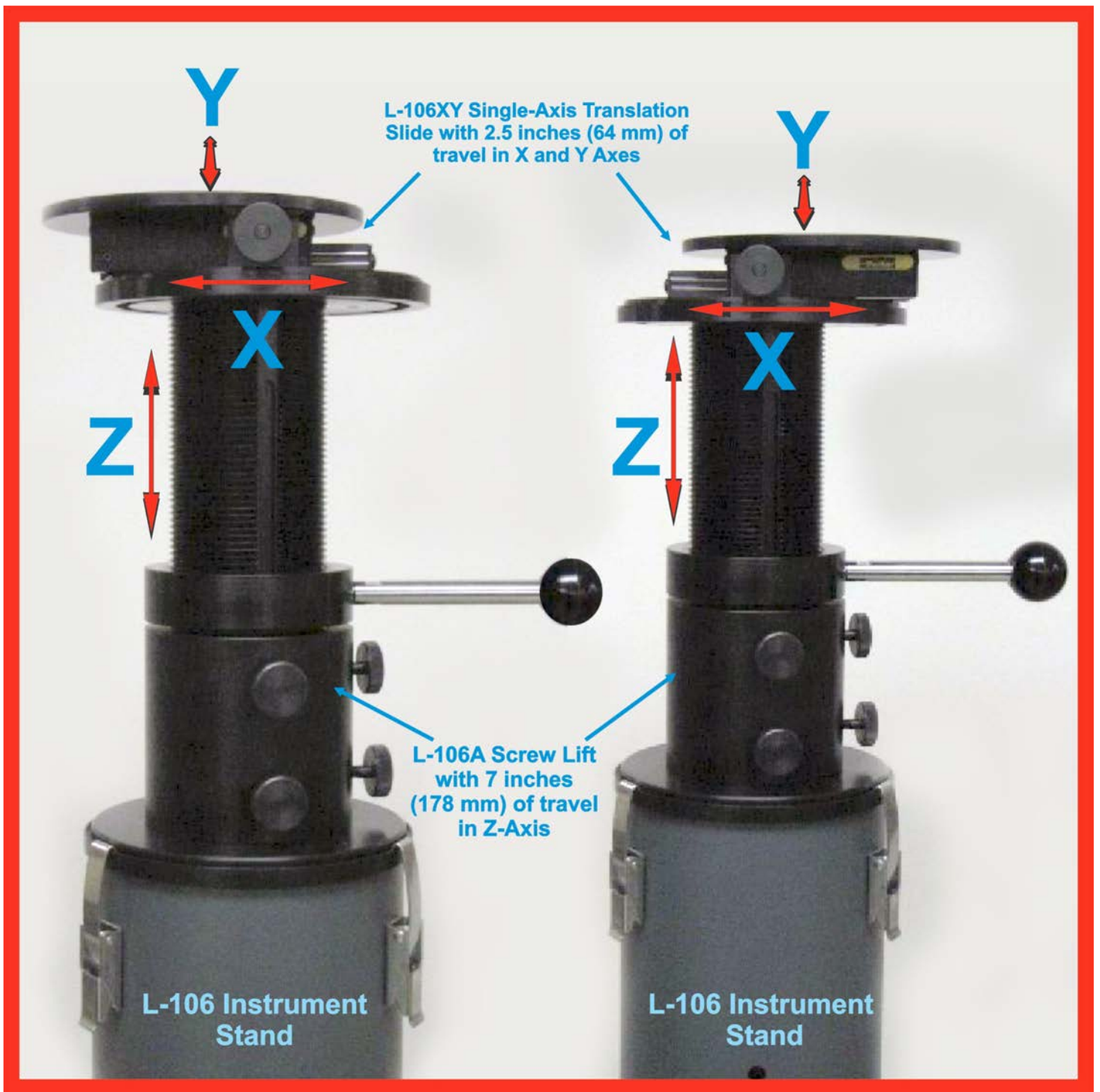
**HAMAR  
LASER®**  
ALIGN WITH THE BEST

5 Ye Olde Road, Danbury, CT 06810 USA

Phone: (800) 826-6185 or +1-203-730-4600 • Fax: +1-203-730-4611

E-mail: [sales@hamarlaser.com](mailto:sales@hamarlaser.com) • Internet: <http://www.hamarlaser.com>

For a list of our distributors, please visit: [http://www.hamarlaser.com/intl\\_distributors.htm](http://www.hamarlaser.com/intl_distributors.htm)



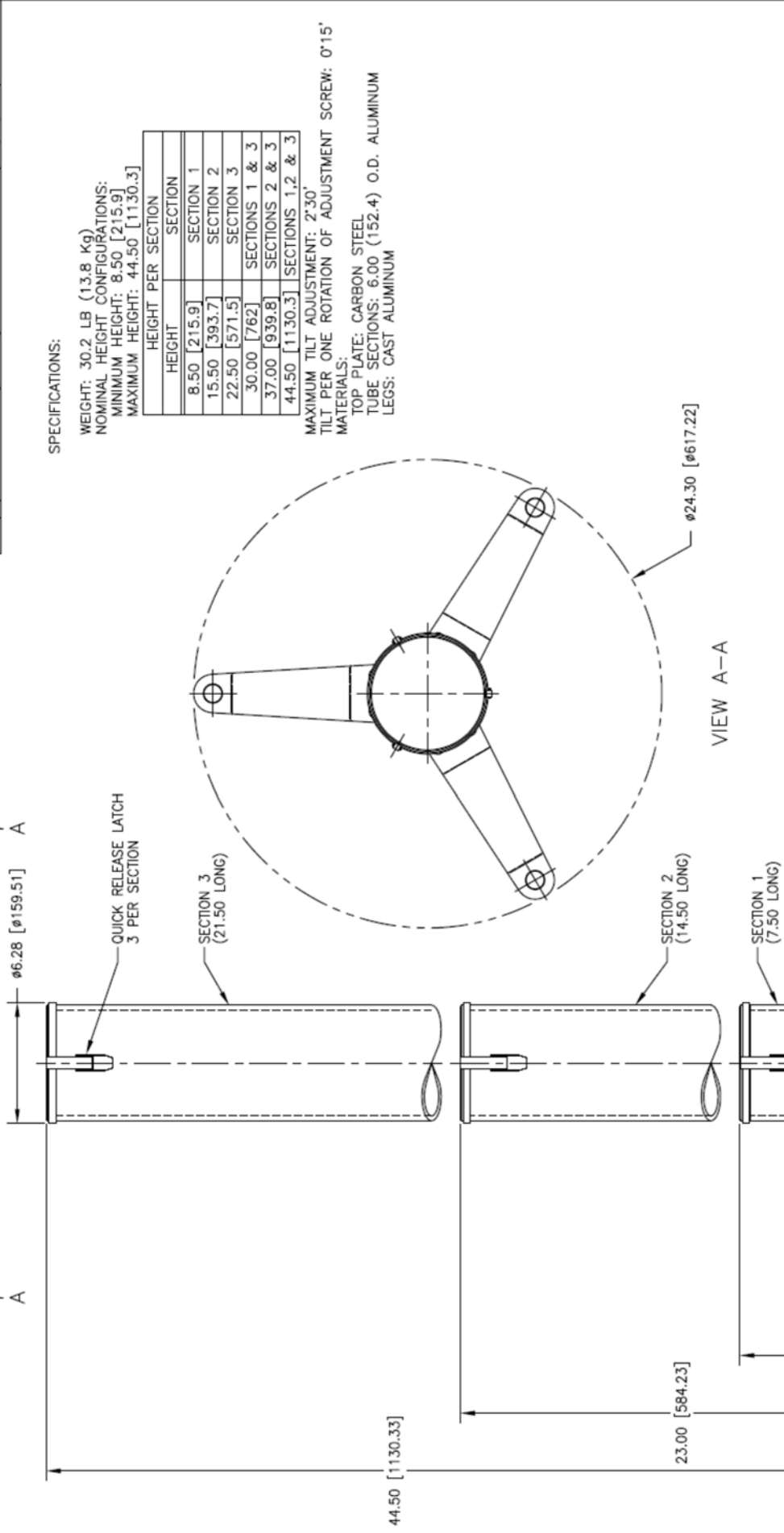
## L-106 Instrument Stand Specifications

<b>Material</b>	Aluminum and stainless steel
<b>Weight</b>	32 lbs. (14.5 kg) without case. 57 lbs. (25.9 kg) with wheeled shipping case
<b>Adjustment Range</b>	$\pm 1.5$ degrees vertical and horizontal angle (pitch and yaw)
<b>Tube Diameter</b>	6 in. (152 mm)
<b>L-106X and L-106XY</b>	2.5 in. (64 mm) of travel for each axis
<b>L-106A</b>	7 in. (178 mm) of height adjustment with .020 in. (0.5 mm) resolution

Development No.:

REVISIONS

REV	DESCRIPTION	DATE	APPROVED
A	Update Nominal Height Configurations	11/11/99	FJE



Mfg. per HD Spec. 3201  
 Unless otherwise specified  
 dimensions are in inches

Decimals: .XX ±.01  
 .XXX ±.005  
 .XXXX ±.0005  
 Angular: ±1/2°  
 Fractions: ±1/64  
 Tolerances:

CONFIDENTIAL: This Drawing, Design, and/or Specifications are the property of Hamar Laser Instruments Inc. and shall not be discussed, disseminated or copied by any means without the written consent of Hamar Laser Instruments Inc.

Hamar Laser Instruments Inc. Logo

Third Angle Projection

Model: RM-LASAC-10623  
 Scale: 1/5  
 Sheet: 1 of 1

Title: L-106 INSTRUMENT STAND SPECIFICATIONS  
 File Path: H:\91000 R&D\Gad Dwg\L106

Drawn: FJE	Date: 12/7/98
Checked: FJE	Date: 12/7/98
Approved: FJE	Date: 12/7/98

Draw No: RM-LASAC-10623  
 Title: A