

The A-1519 and A-1520 Series Type II Universal Wireless Targets

The most accurate, versatile, easy-to-use targets available now operate in both single and dual-axis modes

Target features

- Hamar Laser's A-1519-2.4ZB and A-1520-2.4ZB Type II Universal Wireless targets operate in both single and dual axis modes (depending on the readout used) and are now available with ZigBee® radio technology.
- In single axis scanning mode, the targets can be used with Hamar Laser's continuously sweeping lasers (L-730/L-740 series) for measuring the flatness, straightness, squareness and parallelism of both machine tools and rolls. Several options are available to display the target data: the R-1356-2.4ZB Rugged PDA display, the R-1307-2.4ZB Readout, the R-1307W-2.4ZB Readout or the R-1308 Readout.
- The targets can also be used in dual-axis mode with our L-705/706/708 Bore lasers for steam turbine applications. The R-1307W-2.4ZB or R-1307-2.4ZB are used to display the data.
- The targets provide up to a 1-in. (25 mm) measuring range, an electronic "zero" function and an operating range of 100 feet (30.5 m) from laser to target. The A-1519 has a resolution of .00002 in. (0.5 microns). For applications where greater accuracy is needed, such as surface plates, the A-1520 has a resolution of .00001 in. (0.25 microns).
- The targets feature fully linearized, position-sensitive detectors with automatic background-light correction for extremely accurate readings. The A-1519 targets have an accuracy of +/- 0.00015 in. (0.0038 mm) and the A-1520 targets have an accuracy of +/- .00006 in. (0.0015 mm) over the central 80% of the sensor area.
- Both the A-1519 and A-1520 can easily be converted to a height gage, as the center of the target has been set to a tightly-controlled dimension. Attach the 2.565 in. spacer to the base of the target and the *exact dimension* from laser plane to the measured surface can be obtained. Optional precision spacers are available in 1 in., 2 in., 3 in. and 6 in. sizes, all of which are accurate to .0003 in. (0.0075 mm).
- The A-1519 and A-1520 packages include the target, a magnetic base, and three insert posts (6.25 in., 4 in., and 2 in. or (58.8 mm, 101.6 mm and 50.8 mm) for coarse height adjustment.
- Completely automatic on/off operation with no switches, wires or connections. The target activates when the laser beam sweeps across the target cell and flashing target indicators provide immediate "off target" status.
- Powered by two internal lithium ion batteries for long life and usage. Comes with AC adapter/charger, low battery and charging indicators. Targets can also be charged with the optional A-1519CS-4 Charging Station that charges up to 4 targets simultaneously.
- Data from the target is transmitted wirelessly to the PDA or readout using ZigBee radios with a range of up to 133 ft. (40 m) maximum.



A Wireless Alignment System

With the PDA, up to 5 targets (99 with the A-910-2.4ZB) can function simultaneously with any of Hamar Laser's continuously sweeping lasers in single-axis mode. The wireless targets transmit target data for use with Hamar Laser's alignment programs.



5 Ye Olde Road, Danbury, CT 06810 USA

Phone: (800) 826-6185 or +1-203-730-4600 • Fax: +1-203-730-4611

E-mail: sales@hamarlaser.com • Internet: <http://www.hamarlaser.com>

For a list of our distributors, please visit: http://www.hamarlaser.com/intl_distributors.htm

Specifications

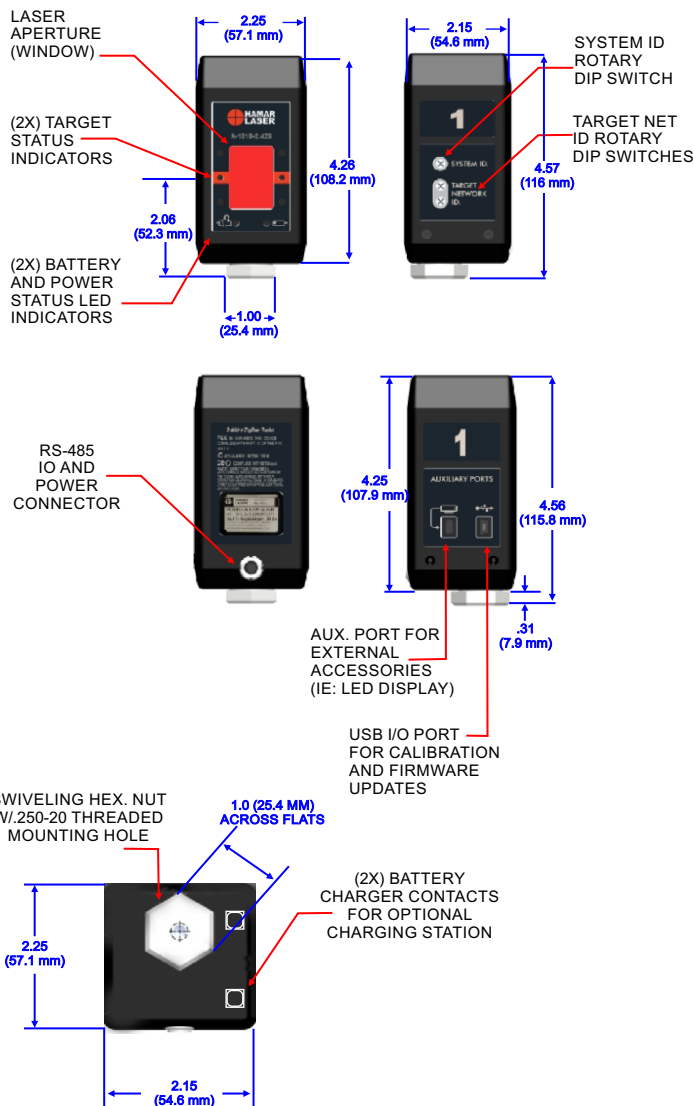
The A-1519-2.4ZB and A-1520-2.4ZB Wireless Targets

General:	
Size:	2.00 in. W x 4.11 in. H x 1.75 in. D (50.8 mm x 104.4 mm x 44.5 mm)
Weight:	13.5 oz. (383 grams)
Target Angle Acceptance Range:	± 10°
Power Supply:	7.5-12VDC, 500mA
Battery Life:	11.5 hours continuous duty
Operating Temperature:	5° F to 140° F (-15° C to 60° C)
Detector Size/Type:	A-1519: 2-Axis PSD 1.3x0.51 in. (33x13 mm) A-1520: .39x.39 in. (10x10 mm)
Operating Range:	100 in. (30.5 m) from laser to target
Auto On/Off Power:	Targets automatically turn on when the laser beam sweeps across the target and turn off when the laser stops sweeping.
Magnetic Base Size:	2.00 in. W x 3.09 in. H x 4.14 in. D (50.8 mm x 78.5 mm x 105.2 mm)
Magnetic Base Weight:	2.78 lb. (1.26 Kg)

Accuracy:			
Model Number	Sensor Resolution	Linearized Accuracy	Measuring Range
A-1519	0.00002 in. 0.0005 mm	±0.00015 in. ±0.0038 mm	± .55 in. ± 14 mm
A-1520	0.00001 in. 0.00025 mm	±0.00006 in. ±0.0015 mm	± .1 in. ±2.5 mm

Measuring range may be limited by obstructions, antenna type and orientation.
Outdoors line-of-sight range, with dipole antenna, may be greater.

Radio Specifications	A-1519-2.4ZB A-1520-2.4ZB
Indoor Range	133 ft. (40 m)
Transmit Power	1.25 MW (+1 dBm) / 2 mW (+3 dBm) boost mode
Radio Frequency	2.4 GHz, DSSS (Direct Sequence Spread Spectrum)
Certification	Agency Certifications for the XBee® 802.15.4 Series 1 FCC (United States of America) Certification Contains FCC ID: OUR-XBEE IC (Industry Canada) Certification Contains Model XBee 802.14.4 IC:4214A-XBEE Complies with ETSI (Europe), C-TICK (Australia) and Telec (Japan)



The R-1308 Auxiliary Readout attaches to the magnetic base post of Hamar Laser's Type II Wireless Unitargets (A-1519-2.4ZB and A-1520-2.4ZB) and operates using a direct connection to the target.